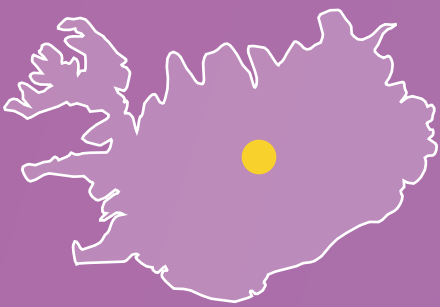


TRANSFORMING EUROPEAN CANCER CARE:

One Network, Universal Access Exceptional Outcomes

By 2028, EUnetCCC will ensure that 90% of eligible patients have access to high-quality cancer care, research and education - no matter where they live.



€112M
total budget



163
Partners



31
Countries

A Network of
100 CCCS
BY 2028
At least one in every
member state

Ensuring that
90%
Of patients
can access a certified CCC
or CCCN.

4 YEARS
to deliver Europe's largest
collaborative oncology
network

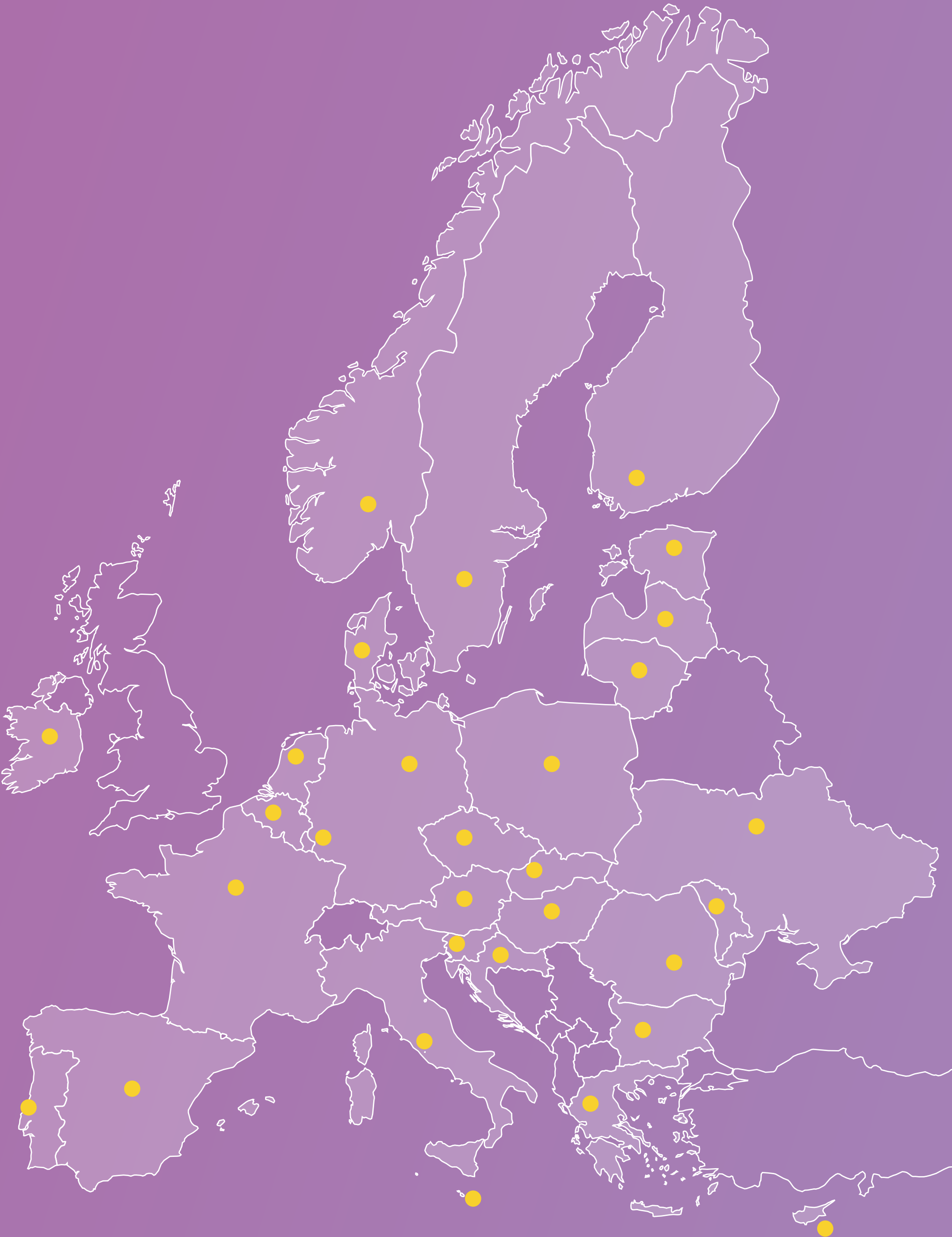


Table of contents

| | |
|---|----|
| Forewords Marina Zanchi | 03 |
| Forewords Thomas Dubois | 04 |
| Forewords Prof. Patriciu–Andrei Achimaş–Cadariu | 05 |
| EUnetCCC Summary | 06 |
| €112M as value creation, not cost | 07 |
| A 163–partner collaborative advantage | 08 |
| From fragmentation to equity | 09 |
| Timeline as a transformation journey | 10 |
| EUnetCCC is the backbone for Europe’s cancer policy | 11 |
| Network of Excellence | 12 |
| WP1: Coordination | 14 |
| WP2: Communication | 17 |
| WP3: Evaluation | 20 |
| WP4: Sustainability | 23 |
| WP5: Certification | 26 |
| WP6: Capacity building | 29 |
| WP7: Governance | 32 |
| WP8: Network Activities | 35 |
| WP9: Comprehensive Cancer Care Networks | 38 |
| Partners | 41 |



“The EUnetCCC is a crucial EU4Health Joint Action, managed by HaDEA, that will benefit European citizens with improved diagnostics, treatment options and care. The trans-European collaboration and exchange of best practices across borders will lead to strengthening national cancer systems. Moreover, this Joint Action will ensure better and more equitable access to cure across the EU, embodying a true spirit of European solidarity.”

Marina Zanchi

Director, European Health and Digital Executive Agency (HaDEA)

“Cancer remains one of Europe’s greatest public health challenges — a disease that touches every community and requires a collective, ambitious response. EUnetCCC is Europe’s effort to build a truly integrated network of Comprehensive Cancer Centers, ensuring that excellence in care, research and innovation is accessible to all patients, wherever they live.

Launched in October 2024 under the EU4Health programme, this Joint Action brings together nearly 200 organisations from 31 countries. Over the next four years, our ambition is to establish around 100 Comprehensive Cancer Centers, defined through a population-based approach and built on cooperation between hospitals, research institutes, universities and innovation partners. This project is about addressing inequalities — between Member States, but also within them. It creates a model that promotes collaboration at local, national and European levels, while supporting continuous improvement through certification, capacity-building and cooperation between centers.

By joining forces, we are helping to shape the cancer infrastructures of the future: more resilient, more equitable, and better prepared to accelerate progress for patients, families and communities across Europe.”

Thomas Dubois

EUnetCCC Project Coordinator – Institut National du Cancer (INCa)





For cancer centres on the front line, EUnetCCC is more than a network — it is a platform for transformation. It offers a unique opportunity to learn from peers across Europe, adopt best practices more rapidly and implement cutting-edge solutions that directly benefit our patients.

The certification process being developed will ensure that every Comprehensive Cancer Center meets the highest standards in multidisciplinary care, research integration and patient engagement. As a participating center, we gain not only recognition, but also the ability to contribute to — and benefit from — collaborative training, capacity building and innovation pilots.

Most importantly, EUnetCCC keeps patients at the heart of its mission. By working together across borders, we can ensure that every patient has access to the same level of excellence, whether they live in a capital city or a remote region. This initiative is a milestone in European oncology — one we are proud to be part of.

Prof. Patriciu-Andrei Achimaş-Cadariu

Professor of Surgical and Gynecologic Oncology and
Former Minister of Health, The Oncology Institute Prof. Dr.
Ion Chiricuta – Romania – EUnetCCC Partner



Summary

The EUnetCCC JA is Europe’s most ambitious initiative to address cancer care disparities through a single, integrated framework. It is designed to transform fragmented national efforts into a cohesive, pan-European network that combines certification, capacity building and collaboration activities, as well as tools for sustainability and synergies with other projects.

With approximately €112 million in funding in combined EU and Member State investments, the initiative provides not only funding but also a structured, results-driven approach that ensures every resource contributes to measurable outcomes.

STRATEGIC RESOURCE ALLOCATION

€112M as value creation, not cost

EUnetCCC represents the largest coordinated investment in cancer care transformation in European history — €90 million in EU funding and ~€22 million co-funding from Member States. This is not a cost, but a strategic investment in reducing inequalities, improving survival and building resilience in European healthcare.

👉 **Impact: earlier diagnoses, improved survival, equitable access and efficient resource use.**



Certification

Establishing a Europe-wide certification scheme for Comprehensive Cancer Centres (CCCs). By 2028, 100 CCCs will be certified, ensuring consistently high standards in multidisciplinary care, research integration, innovation, education, prevention and governance.

100 CCCS
certified by 2028



Capacity Building

Empowering institutions through training, mentoring, pairing – teaming, and knowledge exchange to strengthen readiness and performance across all Member States.


readiness tools, mentoring, pairing and teaming



Sustainability

Embedding governance, legal anchoring and financial strategies to ensure continuity beyond 2028. Provide the operational infrastructure needed to anchor, deploy and scale up major EU initiatives.

governance, legal base, long-term funding, platform to deploy and scale up other initiatives



Network Infrastructure

Creating the governance, digital, and operational platforms to connect centres, facilitate clinical trials and patient recruitment, support prevention hubs and accelerate research translation.

prevention hubs, survivorship, clinical trials

PARTNERSHIP CAPABILITY ANALYSIS

A 163-partner collaborative advantage

The EUnetCCC consortium brings together 163 organisations from 31 countries, representing the most comprehensive cancer collaboration ever launched in Europe. The strength lies in the diversity of partners and the structured way their expertise is combined.

Structured collaboration transforms these capabilities into a collective advantage. For example, a centre of excellence in one Member State can lead a clinical trial with recruitment supported across multiple countries, while another may share validated care pathways for rapid adoption elsewhere.



GEOGRAPHIC COVERAGE

From fragmentation to equity

Cancer survival varies widely across Europe: five-year breast cancer survival exceeds 90% in top-performing countries but falls below 75% in others; lung cancer survival ranges from 20% to 10%. These gaps reflect uneven access to prevention, diagnostics, innovation and trials.⁽¹⁾ ⁽²⁾

EUnetCCC addresses this by establishing a pan-European network of certified centres and regional networks:

- 1. European Cancer Inequalities Registry (ECIR). (2024). Monitoring Inequalities in Cancer Care. European Commission – Joint Research Centre. Available at: <https://cancer-inequalities.jrc.ec.europa.eu>
- 2. OECD & European Commission. (2022). Health at a Glance: Europe 2022. OECD Publishing, Paris. DOI: <https://doi.org/10.1787/507433b0-en>

A Network of
100 CCCS
BY 2028
ensuring every Member State
has at least one CCC.

Ensuring that
90%
Of patients
can access a certified CCC or
CCCN.

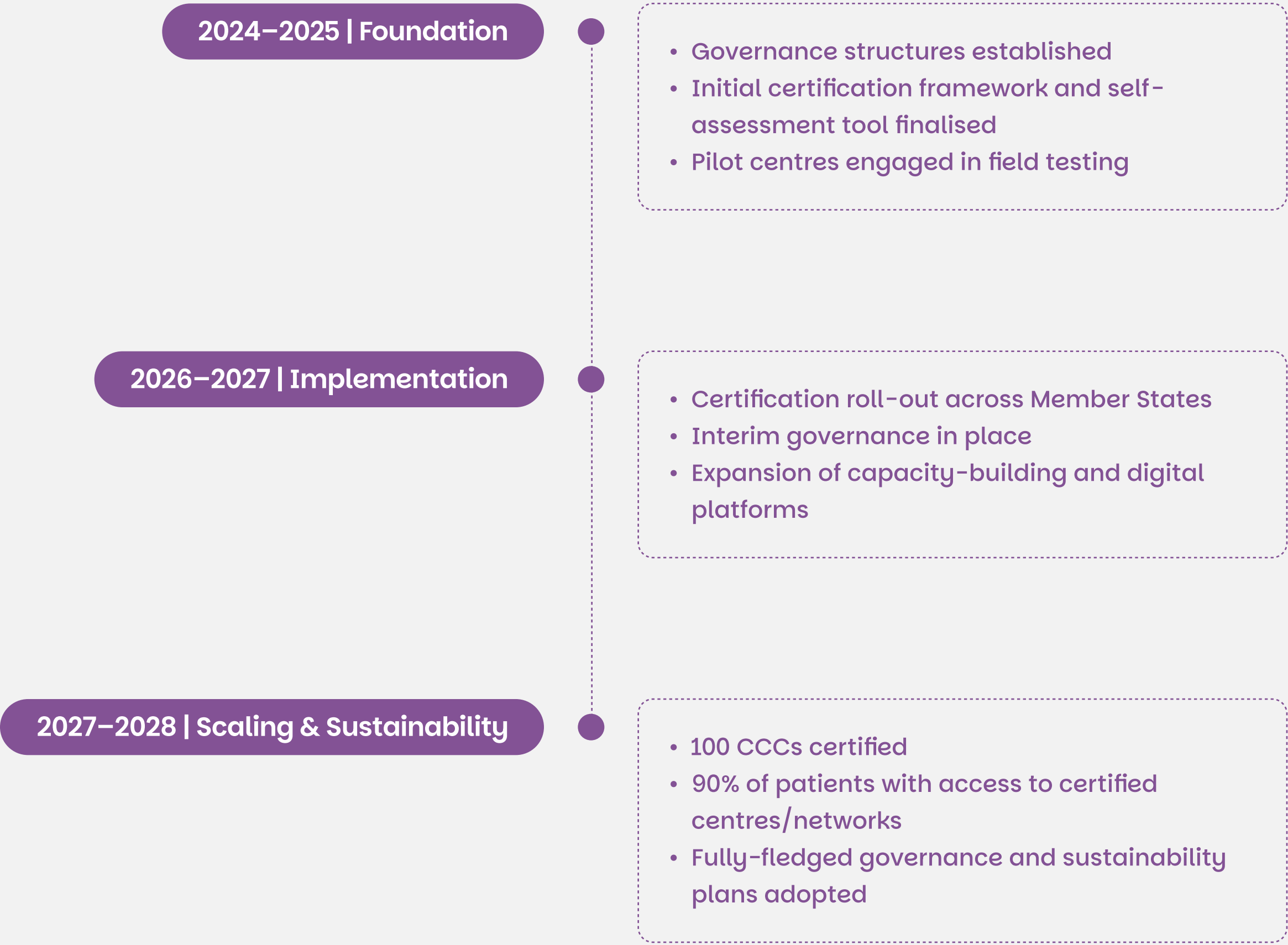
REGIONAL CCCNS
that extend excellence beyond
capital cities to underserved
populations.



TIMELINE

Timeline as a transformation journey

EUnetCCC follows a stepwise four-year journey from foundation to full-scale implementation, ensuring progressive improvements and measurable milestones:



INTEGRATION WITH EU INITIATIVES

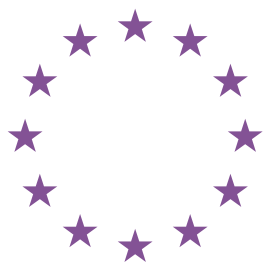
EUnetCCC is the backbone for Europe’s cancer policy

EUnetCCC is not an isolated project — it is the backbone for Europe’s cancer policy. It anchors and connects multiple EU initiatives, ensuring long-term value and reducing duplication.



Europe’s Beating Cancer Plan

Operationalises the ambition of one CCC per Member State by 2030.



European Reference Networks (ERNs)

Bridges specialist rare cancer expertise with a wider CCC infrastructure.



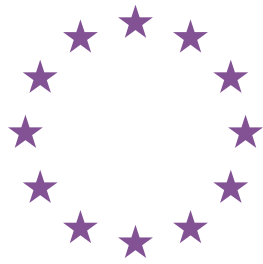
EU Cancer Mission

Provides the infrastructure to translate research into clinical practice.



Other Initiatives (UNCAN.eu, JANE-2, ECHoS, JA PCM, etc)

Uses the certified network as a platform to implement, test, and scale innovations.



EU4Health Programme

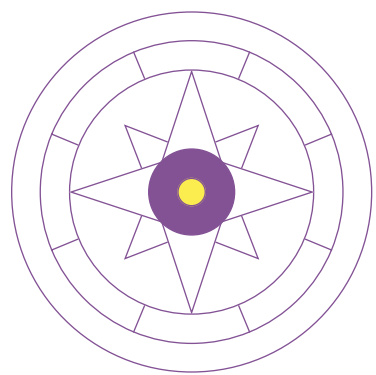
Delivers a tangible, measurable outcome for a flagship EU investment.

EUnetCCC transforms political ambition into operational reality. It takes isolated centres of excellence and connects them into a unified, resilient and equitable European cancer care ecosystem. Through certification, collaboration and sustainability, EUnetCCC delivers what patients, professionals, and policymakers need most: equity, excellence and impact at scale.

Network of Excellence

The Joint Action EUnetCCC is organised into 9 dedicated work packages, each focusing on a key aspect of building a strong, collaborative European network of Comprehensive Cancer Centres.





WP1: Coordination

Ensure the overall coordination, management, and reporting of the Joint Action.

Facilitate collaboration between all partners and Work Packages to achieve timely and coherent implementation.

Lead: INCa (France)
Co-leads: NIJZ (Slovenia),
Sciensano (Belgium),
OUS CCC (Norway)

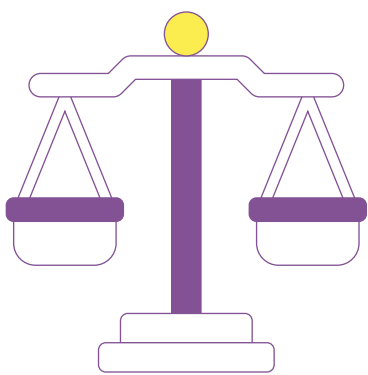


WP2: Communication

Develop and implement the Joint Action's communication strategy.

Ensure visibility, stakeholder engagement, and dissemination of key outcomes across the European cancer community.

Lead: ULSA (Portugal)
Co-leads: LU (Latvia)

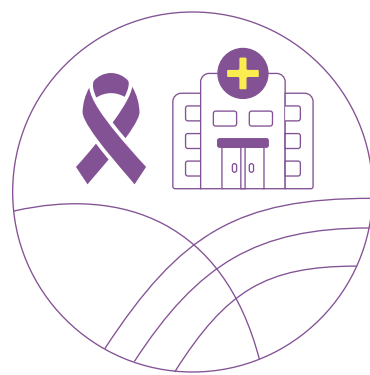


WP3: Evaluation

Design and implement the evaluation framework of the Joint Action.

Monitor progress, assess outcomes, and support continuous learning to strengthen the future European Network of CCCs.

Lead: RSYD (Denmark)
Co-leads: OOI (Hungary),
MHA (Malta)



WP4: Sustainability

Develop strategies for the long-term sustainability of the EU Network of Comprehensive Cancer Centres.

Promote collaboration, knowledge exchange, and policy alignment to embed the network in national and EU frameworks.

Lead: Sciensano (Belgium)
Co-leads: NIJZ (Slovenia)

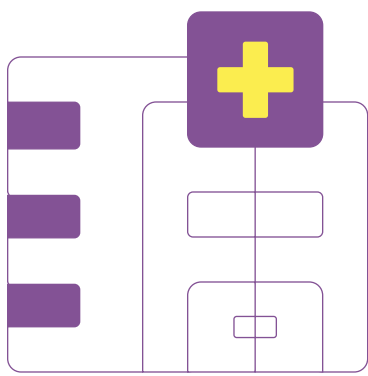


WP5: Certification

Define and pilot the EUCCC certification framework and standards.

Develop tools, methodologies, and processes for the certification of Comprehensive Cancer Centres.

Lead: HAS (France)
Co-leads: Unicancer (France)

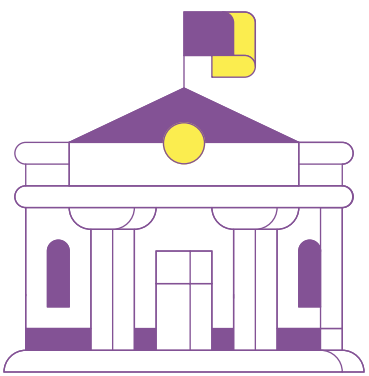


WP6: Capacity Building

Support countries and centres in preparing for EUCCC designation and certification.

Promote guidance, training, and twinning activities that encourage peer learning and build capacity across Europe.

Lead: ICO (Spain)
Co-leads: RSYD (Denmark),
ESTCAN (Estonia)

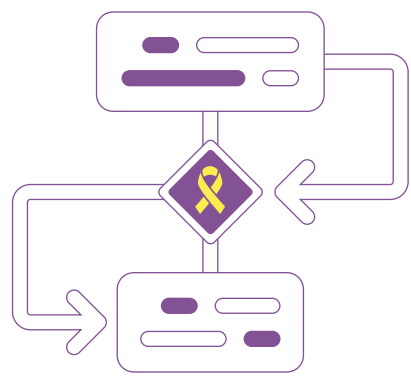


WP7: Governance

Define the governance and membership framework for the future European Network of CCCs.

Develop rules, structures, and decision-making mechanisms to ensure transparent and inclusive coordination.

Lead: ACC (Italy)
Co-leads: MSCl (Poland)



WP8: Network Activities

Coordinate collaborative activities among CCCs across thematic domains.

Facilitate exchanges of best practices, joint projects, and multidisciplinary cooperation across the network.

Lead: OUS CCC (Norway)
Co-leads: IOCN (Romania),
Karolinska CCC (Sweden),
Sahlgrenska CCC (Sweden)

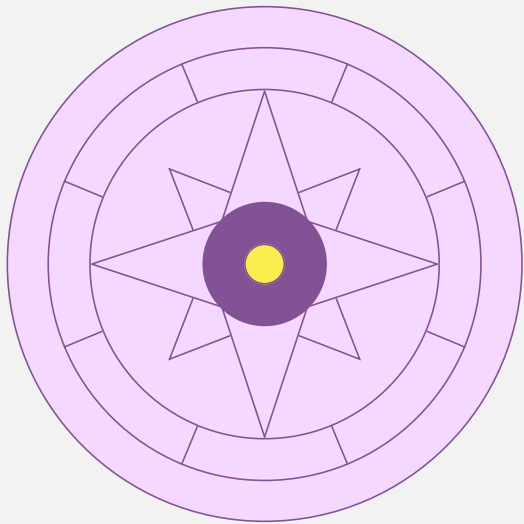


WP9: Comprehensive Cancer Care Networks

Support the development of comprehensive cancer care networks connected to CCCs.

Provide models, standards, and tools to ensure equitable access to high-quality cancer care for all patients.

Lead: DKG (Germany)
Co-leads: NIZP PZH-PIB (Poland)



SUMMARY

WP1: Coordination

Work Package 1 (WP1) is responsible for the overall coordination and strategic oversight of the EUnetCCC Joint Action. Its main objective is to ensure the coherent implementation of the project—both operationally and politically—in alignment with European and national priorities. WP1 provides the leadership and governance needed to translate the project’s shared vision into action, across all Work Packages and participating countries.

To do so, WP1 develops and manages governance processes that support coordination, integration, and flexibility.

These processes allow the project to adapt to organisational, financial, and strategic challenges that may arise during the lifetime of such a large and complex initiative. WP1 also promotes a culture of trust, transparency, and mutual learning, by encouraging collaboration and sharing of experiences across the project. This leadership is exercised in close connection with all partners, Member States, and the European Commission, as key political and institutional stakeholders.



WP1: COORDINATION

Key Activities

1

Prepare, chair and follow up of all governing bodies in the project:

including the Coordination Team, Project Management Team, Steering Committee, General Assembly, and Consortium meetings – ensuring coordinated and transparent decision-making

4

Facilitate coordination and collaboration across Work Packages, supporting cross-WP initiatives and learning processes.

7

Coordinate international and strategic partnerships to strengthen global collaboration (with WP4 and WP8).

2

Maintain high-level engagement with the European Commission and the 31 participating countries.

5

Oversee the development of the EUnetCCC Portal, the digital entry point to the European Network.

The Portal will include:

A public landing page to communicate about the Network, its members, and achievements;

A restricted area for Network members providing access to operational tools and modules such as the certification tool, maturity model tool, and collaboration platform.

3

Develop and apply management and monitoring tools

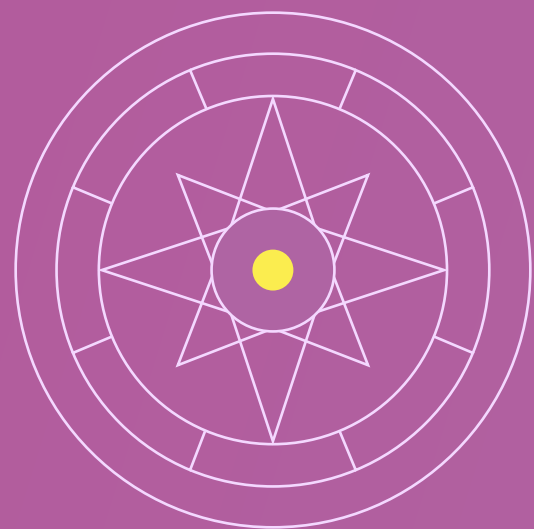
(in collaboration with WP3), to track progress, manage risks, and adjust plans, budgets, and organisational structures as needed.

6

Support the organisation and content of Annual Meetings (with WP2)

8

Prepare the transition towards a sustainable, membership-based European Network of Comprehensive Cancer Centres (with WP7).



WP1: COORDINATION

Results

Expected outcomes

WP1 will provide the project with strong and responsive leadership. It will set up efficient governance processes that support integration, cooperation, and knowledge-sharing.

It will help the project remain aligned with its overall purpose: reducing inequalities and accelerating progress in cancer care and research.

WP1 will also foster a shared culture based on the values of excellence, equity, and collaboration—captured in the project’s motto: ONE FOR ALL.

Agile leadership unites partners, accelerating equitable cancer care.

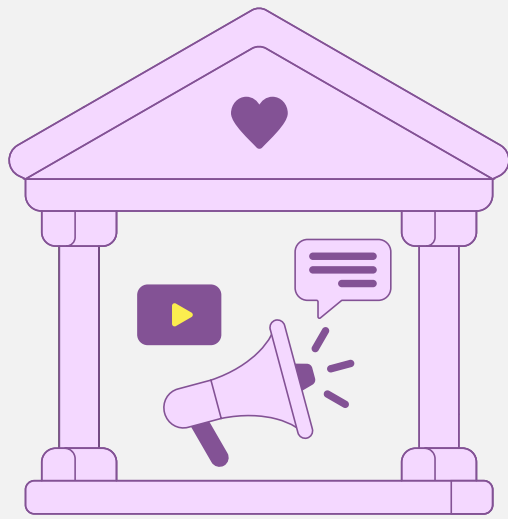
Contribution to the Joint Action

WP1 plays a central role in supporting coherence and collaboration across the Joint Action.

It ensures that all 163 partners across 31 countries work in a coordinated and strategic way.

By managing collaboration, political dialogue, and long-term vision, WP1 ensures that the project delivers lasting impact and contributes to the sustainable development of a European network of CCCs beyond the end of the project.

WP1 coordinates 163 partners across 31 countries—aligning strategy, dialogue, and vision to build a lasting European CCC network.

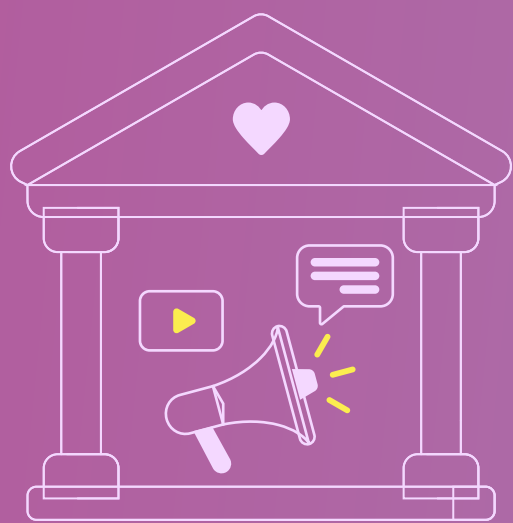


SUMMARY

WP2: Communication

Work Package 2 (WP2) focuses on strategic communication, dissemination and stakeholder engagement to ensure the visibility, understanding and impact of the EUnetCCC initiative across Europe.

Its main goal is to raise awareness about the project’s objectives and outcomes, promote the added value of the European Network of Comprehensive Cancer Centres (CCCs) and foster collaboration and engagement among all key audiences, including policymakers, healthcare professionals, patients and the wider cancer community.



WP2: COMMUNICATION

Key Activities

1

Developing and implementing communication and dissemination strategy

Develop a comprehensive strategy, including branding, messaging, and tailored outreach plans.

2

Collaborating closely with CCCs:

Showcase best practices, highlight institutional achievements, and amplify their role as models for high-quality cancer care across Europe.

3

Producing communication materials:

Create press releases, policy briefs, infographics, videos, and event materials.

4

Creating and maintaining digital platforms:

Oversee the project website, newsletters, and social media channels to share news, progress, and success stories.

5

Supporting WPs in knowledge translation:

Assist in translating technical outputs into accessible information for professionals, policymakers, patients, and the public.

6

Organising stakeholder engagement activities:

Facilitate workshops, webinars, and campaigns to encourage dialogue and participation.



WP2: COMMUNICATION

Results

Expected outcomes

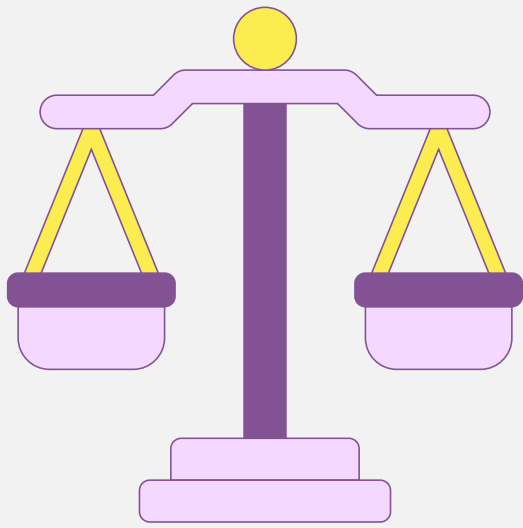
WP2 will deliver a strong project identity, a steady flow of high-quality communication outputs, and targeted dissemination actions that maximise the visibility and credibility of EUnetCCC.

Contribution to the Joint Action

By raising awareness, promoting knowledge exchange, and supporting collaboration with CCCs to showcase best practices and institutional achievements, WP2 directly contributes to EUnetCCC’s ambition to reduce inequalities and accelerate innovation in cancer care across Europe. These activities help ensure that effective models are shared, adapted, and implemented across diverse healthcare systems.

WP2 also enables engagement among a wide range of stakeholders, builds public trust, and lays the groundwork for sustained impact beyond the project’s lifetime. Stakeholders, including CCCs, professional societies, patient organisations, and policymakers can connect with WP2 by sharing content, co-creating messages, and participating in communication and outreach activities.

WP2 connects stakeholders to scale best practices, build trust, and accelerate equitable cancer care across Europe—beyond the project.



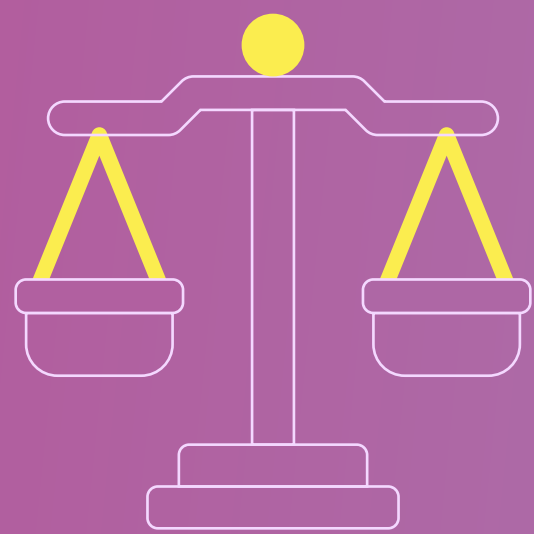
SUMMARY

WP3: Evaluation

Work Package (WP3) aims to evaluate Joint Action (JA) EUnetCCC and the European (EU) network of Comprehensive Cancer Centres (CCCs).

This is done through the implementation of a comprehensive evaluation framework that allows WP3 to monitor and evaluate activities, results and the overall effectiveness of the JA and the network.

The ambition is to ensure transparency and accountability, and to nurture and support a culture of learning and continuous improvement throughout and beyond the lifecycle of the JA.



WP3: EVALUATION

Key Activities

1

Developing and implementing an evaluation framework for the JA EUnetCCC and EU network of CCCs

Create and implement an evaluation framework in collaboration with coordinators and WP leaders. This framework includes four tracks covering KPIs & monitoring, process & output evaluation, outcome & impact evaluation and learning, feedback & dissemination. WP3 will develop and maintain a dashboard to provide stakeholders with evaluation data.

3

Regular reporting and management of dashboards

Publish an evaluation report each year to present key findings and suggestions. Relevant indicators will be available on the dashboard, which will be maintained and updated to keep stakeholders well informed.

2

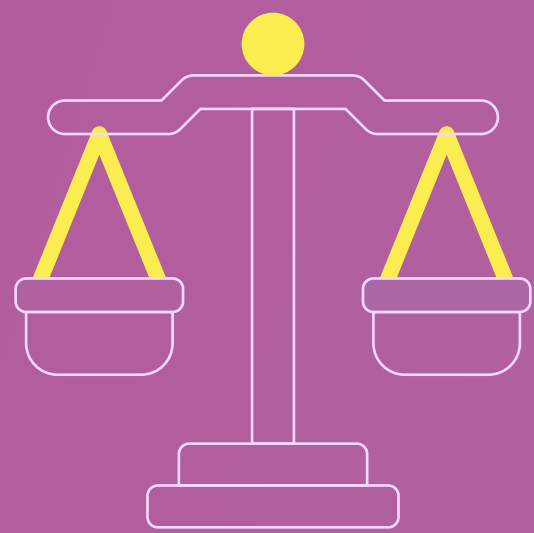
Managing data collection and analysis

Collect data including KPIs, satisfaction surveys, co-creation workshops, and interviews, and will also explore evaluation data produced by other WPs. Indicators to measure the impact of JA are developed. Data will be analysed to provide feedback, track progress, offer insights to guide strategic planning, identify areas requiring enhancement, and assess the project's effectiveness.

4

Publishing and disseminating evaluation results

Formulate actionable recommendations for future strategies to improve the effectiveness of the EU network of CCCs based on evaluation insights. Key insights will also be published in scientific journals.



WP3: EVALUATION

Results

Expected outcomes

WP3 will address initial challenges, share lessons learned, highlight areas that may require further attention or strategic adjustments, and ultimately contribute to ensuring transparency across the consortium.

Furthermore, the ambition is that evaluation results will provide valuable insights into the specific outcomes and overall impact of the JA.

This will not only benefit the consortium, stakeholders, and CCCs by providing insights into the process and results of the project but is also valuable to other JAs as best practice.

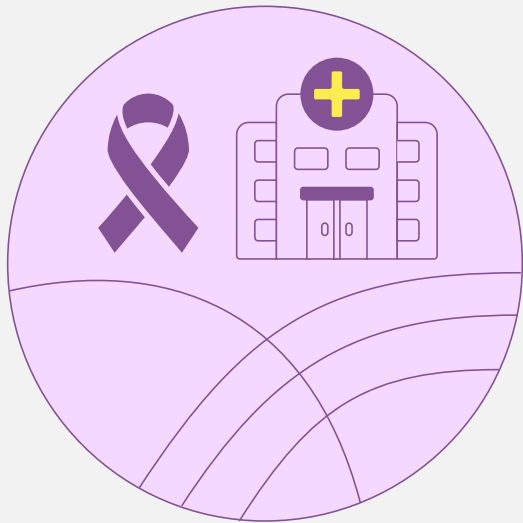
WP3 delivers transparent evaluation and actionable insights—guiding course-corrections and setting best practice for the Joint Action.

Contribution to the Joint Action

WP3 will help ensure the overall quality and monitor the outcomes and impact of the JA.

WP3 will also support the other WPs in their evaluation efforts, providing insights and feedback for improvement to enhance the effectiveness and success of the project.

WP3 safeguards quality and impact—monitoring results and equipping all WPs with continuous-improvement feedback.



SUMMARY

WP4: Sustainability

WP4 aims to define a strategy to ensure the sustainability of the European Union (EU) network of CCCs beyond the duration of the Joint Action (JA).

This strategy builds on the insights gathered from pilot studies to evaluate the readiness and maturity level towards CCC-compliant structures across Member States and Associated Countries by evaluating their readiness against proposed certification standards and criteria.

WP4 will facilitate dynamic exchange of experiences and challenges in CCC development.

WP4 also aims to establish connections with major European health initiatives, international programs, and relevant stakeholders to enhance the integration and long-term impact of JA EUnetCCC.



WP4: SUSTAINABILITY

Key Activities

1

Developing a comprehensive sustainability plan

Shape a forward-looking, long-term vision for the EU Network of CCCs, informed by real-world insights from pilot studies and continuous feedback from participating centres. Prepare, chair and follow up on all governing bodies within the Policy Board to ensure effective coordination, strategic alignment and continuity of governance activities.

2

Delivering evidence-driven recommendations

Facilitate bilateral consultations with the centres and identify gaps and best practices, provide actionable recommendations and propose refinements for CCCs to align with real-world needs.

3

Forging strategic partnerships

Develop strong partnerships European initiatives such as JANE, ECHoS, ERNs, and the Europe’s Beating Cancer Plan to expand cross border collaborations and amplify the impact of the network.



WP4: SUSTAINABILITY

Results

Expected outcomes

WP4 will produce a clear and actionable sustainability roadmap that reflects insights from pilot studies and incorporates input from all other WPs.

The roadmap will capture experiences from cancer centres, highlight critical implementation challenges, and provide concrete steps to support the long-term resilience of the EU Network of CCCs.

By strengthening ties with EU initiatives, WP4 will create new collaborative opportunities and enhance resource sharing, promoting sustainable innovation across Europe.

WP4 delivers an actionable sustainability roadmap—turning pilot insights into concrete steps and EU ties that secure a resilient CCC network.

Contribution to the Joint Action

WP4 is central to sustaining the capabilities of the established EU network of CCCs beyond the lifetime of the JA.

Through evaluation of organisational models and compliant structures, WP4 will provide Member States and Associated Countries with adaptable frameworks to support national CCC development.

The outcomes of WP4 activities will serve as a foundation for embedding certification standards and criteria in long-term EU policy and practice. This will secure a future-proof EU network of CCCs and reinforce its significance in transforming cancer care and research across Europe. Ultimately, it will ensure that patients across Europe will benefit from improved and equitable access to CCC services, regardless of geographic location.

WP4 future-proofs the EU CCC network —providing adaptable frameworks and embedding certification in policy to secure equitable access beyond the JA.



SUMMARY

WP5: Certification

Work Package 5 (WP5) aims to develop a comprehensive certification framework focused on excellence and inclusion of future European Comprehensive Cancer Centres (EUCCCs).

The ultimate goal of WP5 is to establish a field-tested certification framework adapted to different contexts across Europe and secure its scaling-up through continuous monitoring and evaluation.

Implementation conditions of the EUCCC certification framework will be met through the design of seamless and efficient certification processes, including appropriate online tools, guidelines for candidate centres and certification operators. WP5 will conduct comprehensive testing of the EUCCC certification framework to validate its effectiveness and identify areas for improvement.



WP5: CERTIFICATION

Key Activities

1

Delivering the initial EUCCC certification framework combining excellence and inclusiveness:

Facilitate aspiring comprehensive cancer centres from all over Europe, including in smaller countries, to apply.

2

Mapping national cancer public policies and existing certifications in Europe:

Identify national barriers and enablers and design relevant implementation paths of the EUCCC certification anchored in the context of each country.

3

Defining guidelines for selecting certification operators:

Ensure a harmonised implementation approach of the EUCCC certification by audit teams when they certify candidate centres.

4

Defining specifications of the EUCCC Certification Data Management system:

Provide candidate centres with user-friendly webtools for certification purposes without increasing their administrative burden.

5

Testing clarity, relevance, feasibility and user-friendliness of the EUCCC certification framework:

Refine the certification framework prior to its roll-out by incorporating feedback from cancer centre leaders, healthcare professionals, and experienced auditors, ensuring it meets the real needs and expectations of future end-users.



WP5: CERTIFICATION

Results

Expected outcomes

WP5 will develop, test, and roll out a complete and inclusive certification scheme for European CCCs, with the expected outcome of certifying 100 EUCCCs across Europe by the end of 2028.

WP5 rolls out inclusive EUCCC certification—targeting 100 certified centres by 2028.

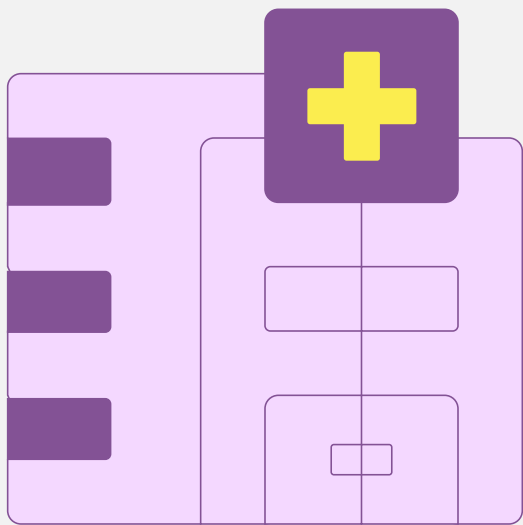
Contribution to the Joint Action

WP5 plays a crucial role in ensuring the EUCCC certification framework is meaningful for multidisciplinary care teams all over Europe, focused on patient outcomes and adapted to the disruptive pace of healthcare innovation.

By developing and maintaining the EUCCC certification framework, WP5 will support dynamic quality improvement and capacity building throughout the network, with special emphasis on support for centres in smaller and Eastern European countries.

Through these efforts, WP5 will foster continuous improvement and elevate standards of care across the continent.

WP5 makes certification practical and future-ready—driving continuous quality and capacity gains across Europe, with strong support for smaller and Eastern centres.

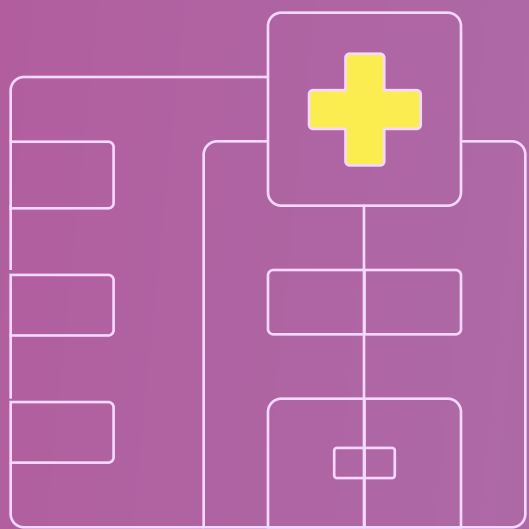


SUMMARY

WP6: Capacity building

Work Package (WP6) aims to enhance the capacity of cancer centres across Europe to achieve certification as Comprehensive Cancer Centres (CCCs) within the European Comprehensive Cancer Centre (EUCCC) certification framework.

By fostering leadership, institutional development, and continuous quality improvement, WP6 will support centres of varying sizes and resource levels to meet the highest standards of cancer care, research, and innovation.



WP6: CAPACITY BUILDING

Key Activities

1

Conducting readiness and maturity assessment

Implement a robust Maturity Model to help candidate CCCs map their strengths and growth areas, providing a strategic starting point for tailored development.

2

Developing tailored capacity building programmes

Deliver dynamic capacity building through coaching, mentoring, teaming, and pairing; empowering centres with the expertise and confidence to meet certification standards.

3

Launching capacity building resource centre

Create an open-access hub of practical tools, validated methodologies, and expert insights to guide and inspire centres on their certification journey.

4

Empowering cancer centres

Proactively identify and support centres in facing their unique challenges and starting conditions, ensuring that no centre is left behind in the drive for excellence.

5

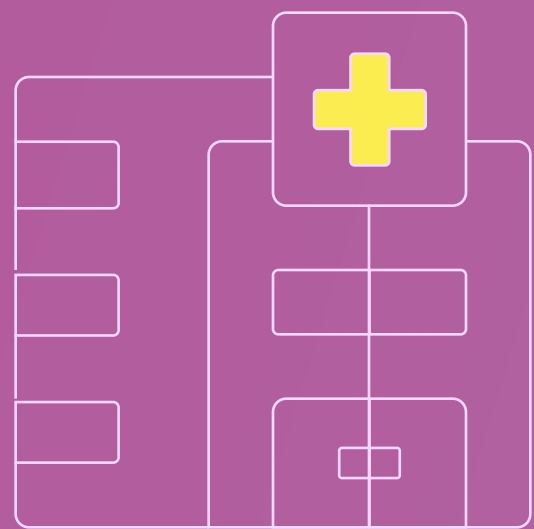
Supporting quality improvement for lasting impact

Develop and deploy meaningful quality improvement indicators and monitoring systems to support continuous progress, accountability, and measurable success.

6

Providing actionable implementation guides

Deliver a comprehensive preparatory guideline and seven hands-on, domain-specific implementation guides, providing a clear roadmap for centres striving to meet the EUCCC standards.



WP6: CAPACITY BUILDING

Results

Expected outcomes

WP6 will strengthen the capacity of cancer centres across Europe to achieve and maintain CCC certification by fostering a culture of continuous quality improvement.

This will lead to a more cohesive network of centres, reducing inequalities in cancer care and improving access to comprehensive, high-quality services for patients regardless of location.

WP6 builds capacity to achieve and sustain CCC certification—driving continuous improvement, a cohesive network, and equitable access.

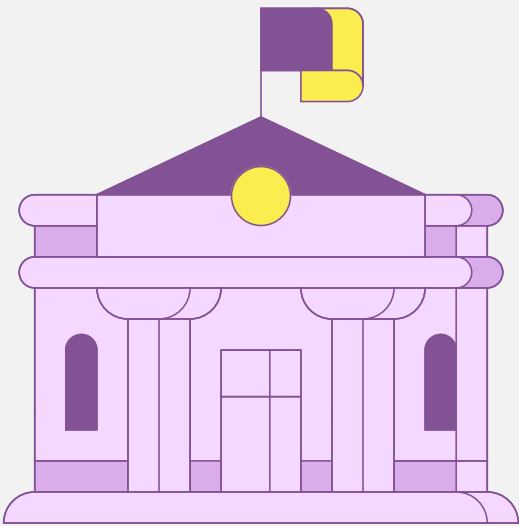
Contribution to the Joint Action

WP6 directly contributes to reducing inequalities in access to high-quality cancer care by enabling more centres to achieve CCC certification, irrespective of their starting point or resource availability.

By equipping centres with tools for capacity building, structured quality improvement, and expert support, WP6 will strengthen the foundations for comprehensive, patient-centred cancer care across Europe.

This work supports the wider goals of JA EUnetCCC by fostering a resilient oncology workforce, promoting sustainability in quality standards, and building a more integrated European cancer care landscape aligned with the ambitions of Europe’s Beating Cancer Plan.

WP6 closes access gaps—enabling CCC readiness with tools, expert support, and sustained quality.

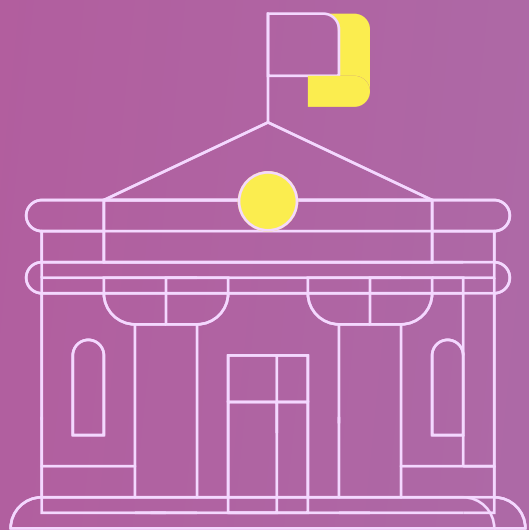


SUMMARY

WP7: Governance

Work Package (WP7) is where vision becomes structure. WP7 is dedicated to bringing the European (EU) network of Comprehensive Cancer Centres (CCCs) to life by designing the governance model and engagement framework that will define how the network collaborates, evolves, and champions progress across Europe.

The goal is to lay a strong, future-ready foundation that not only supports the network throughout the Joint Action (JA) but ensures its growth and impact for years to come.



WP7: GOVERNANCE

Key Activities

1

Designing the governance framework

Building on the CraNE project’s results, define the governance architecture of the EU network of CCCs including clarifying bodies, roles, responsibilities and decision-making processes to support its long-term functioning.

2

Establishing governance policies and procedures

Develop a coherent set of standard operating procedures to guide the functioning of the EU network of CCCs.

3

Designing membership rules and supporting network expansion

Develop clear criteria for membership and contributing to the gradual inclusion of centres from all EU Member States and Associated Countries, ensuring balanced and broad participation.

4

Operationalising governance structures

Set up an interim governance of the EU network of CCCs and coordinating the transition to a permanent, independent structure by the project’s end.

5

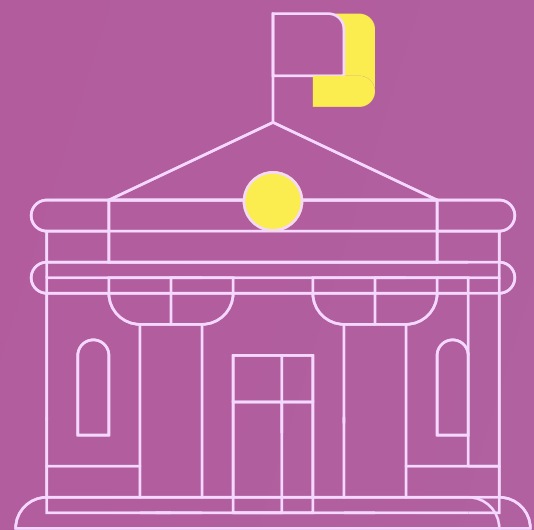
Onboarding and engagement

Support new members in joining and actively participating in the EU network of CCCs and its activities, while also fostering collaboration with external stakeholders.

6

Evaluating governance performance

Regularly assess the effectiveness, inclusivity, and transparency of the governance system to ensure continuous improvement.



WP7: GOVERNANCE

Results

Expected outcomes

By the conclusion of the JA, WP7 will ensure that the EU network of CCCs will have a fully operational governance structure in place comprising of defined bodies, standing operating procedures and decision-making mechanisms. This will be supported by an active and expanding membership.

This functioning network will empower CCCs and aspiring CCCs to connect, collaborate, and drive excellence in cancer care and research across Europe, reducing disparities and improving patient outcomes through shared knowledge, aligned practices, and collective innovation.

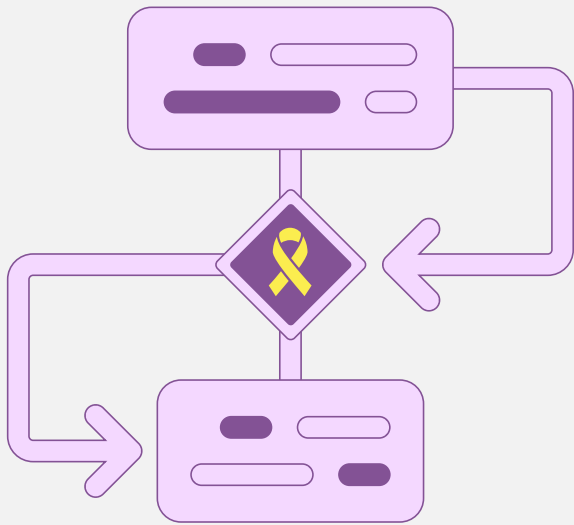
WP7 sets up a fully operational EU CCC governance and growing membership —enabling collaboration, aligned practice, and better patient outcomes.

Contribution to the Joint Action

WP7 is the backbone of the infrastructure of the EU network of CCCs. It enables the integration and coordination of the key functions developed across the JA by providing a shared governance platform.

Through its efforts, WP7 ensures that outputs from other WPs are institutionally anchored, scalable, and embedded in a sustainable network model that will persist after the end of the JA, thus supporting the long-term vision of a strong and united European cancer community.

WP7 is the network backbone—integrating JA outputs into shared governance that anchors, scales, and sustains the EU CCC infrastructure beyond the JA.

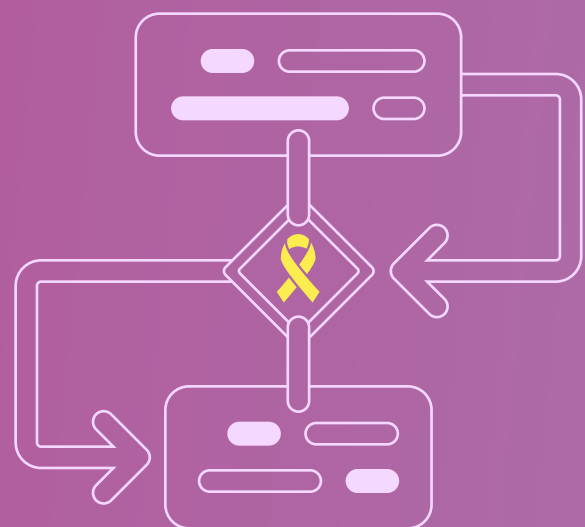


SUMMARY

WP8: Network Activities

Work Package 8 (WP8) aims to release the potential of collaboration among the European (EU) network of Comprehensive Cancer Centres (CCCs) and strengthen their collective impact across Europe.

It will address the growing need for structured collaboration across institutions, driven by increasing specialisation, limited expertise, and the shift toward precision medicine with smaller patient cohorts.



WP8: NETWORK ACTIVITIES

Key Activities

WP8 offers a broad range of activities designed to foster exchange, learning, and innovation. These include twinning and institutional exchanges, expert seminars and workshops, collegial interviews and peer dialogues, conferences, roundtable discussions, and collaborative teaming through expert groups. These efforts will promote active engagement across all eight thematic areas.

1

Facilitating the implementation of guidelines

Strengthen the role of CCCs in implementing clinical guidelines, identifying gaps, and sharing experiences to support collaboration to adapt guidelines to different healthcare contexts and improve their relevance and uptake.

2

Promoting personalised primary and secondary prevention

Enhance the role of CCCs in advancing personalized cancer prevention and screening through the development of Prevention Knowledge Hubs, a combination of digital platforms and local hubs within CCCs for sharing prevention research, tools, and innovations.

3

Strengthening the cancer research ecosystem

Support CCC in expanding their research capabilities, enabling them to serve as key drivers of excellence in cancer research and innovation.

4

Accelerating the adoption of precision diagnostics

Advance the fast-track implementation of precision diagnostics infrastructure by promoting standardisation and harmonisation, knowledge exchange, and the development of specialised expertise across centres.

5

Enabling the secondary use of data in research and governance

Develop frameworks to support secondary use of data and promote standardised data practices to help CCCs create flexible, multipurpose clinical data warehouses to support both care and research.

6

Advancing clinical trial capacity and collaboration

Reinforce the ability of CCCs to conduct high-quality, multi-centre clinical trials, enhancing their role in Europe’s research landscape and improving access to innovative treatments.

7

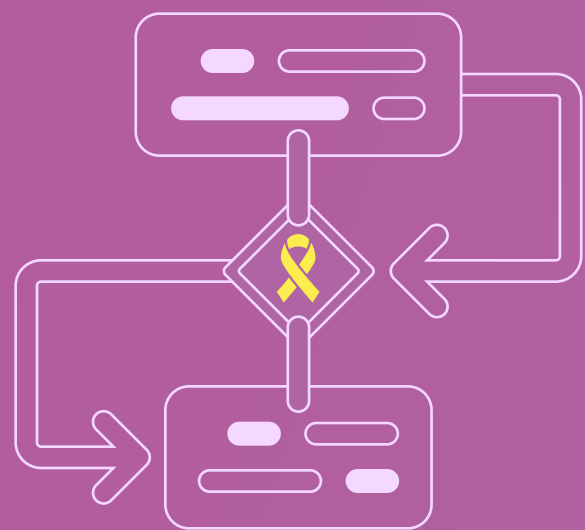
Supporting survivorship programmes in CCCs

Support the development and implementation of comprehensive survivorship programmes tailored to meet the diverse needs of cancer survivors across the EU.

8

Enhancing governance and leadership in cancer centres

Support improved governance, leadership, and operational efficiency through peer learning and a dedicated leadership academy, helping CCCs grow as sustainable and well-managed institutions.



WP8: NETWORK ACTIVITIES

Results

Expected outcomes

WP8 will provide meaningful opportunities for CCCs to engage in joint activities that enable professionals to grow their skills, share knowledge, and build lasting cross-border connections. When one centre finds a solution, others can implement it within their own context, benefitting from shared access to tools, good practices, and a supportive community that enhances their daily work and long-term impact. Collaboration models will be designed for scalability and adaptability, so successful approaches can be expanded to new thematic areas.

WP8 will help CCCs align with EU priorities, set and adopt shared standards, and become part of a wider network committed to excellence and continuous improvement in cancer services. By fostering alignment between cancer centres and national cancer plans, WP8 will support development of cohesive care ecosystems, create a resilient workforce and pave the way for a future where excellent practice is not a distant benchmark, but a living, shared reality built by the CCC community itself.

WP8 scales cross-border skill-sharing and standards—aligning CCCs with EU priorities to build a resilient, excellence-driven care ecosystem.

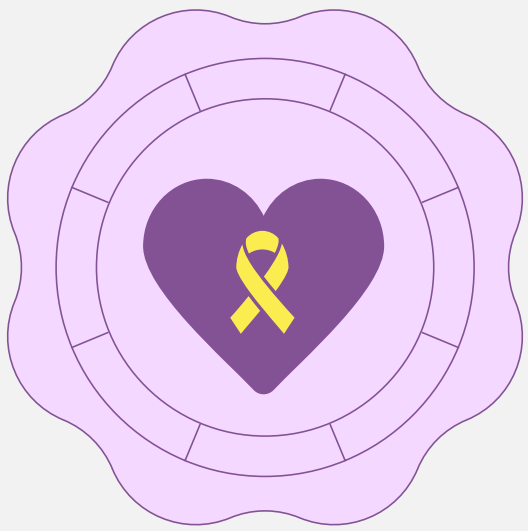
Contribution to the Joint Action

WP8 turns strategic goals into structured, real-world collaboration, demonstrating how joint action across institutions, regions, and countries can strengthen cancer care and research in Europe.

At the Joint Action level, WP8 will build a connected and collaborative community of CCCs. It delivers practical tools, tested approaches, and joint initiatives that support long-term EU goals. WP8 will support other WPs by providing tools for building capacity ([WP6](#)), raising the ability to perform high-quality care and research ([WP5](#)), supporting outreach ([WP9](#)), foster engagement of network members ([WP7](#)) and commitment for sustainability of the network of CCCs ([WP4](#)). Within the EU network of CCCs, WP8 will create a valuable arena for both certified and aspiring CCCs to engage, share expertise, and benefit from collaboration. It promotes continuous development in care and research, aligns centres with the CCC certification framework, and delivers clear added value to professionals, institutions, and patients. This drives CCCs to move beyond individual excellence, towards a collective, system-wide advancement in cancer care and research across Europe.

For Member States and Associated Countries, WP8 will provide a collaborative framework to activate shared resources, address common challenges, and reinforce national capacities. This directly supports the implementation of Europe’s Beating Cancer Plan and fosters greater alignment across health systems.

WP8 turns strategy into scalable joint action—linking CCCs and Member States to lift care and research system-wide.



SUMMARY

WP9: Comprehensive Cancer Care Networks

Work Package 9 (WP9) aims to expand access to comprehensive, high-quality, tumour-specific care within Comprehensive Cancer Care Networks (CCCNs) across all EU Member States.

The goal is to ensure patients can receive treatment close to home while reducing inequalities in cancer care throughout Europe.

WP9 promotes high standards of care by fostering sustainable collaboration between CCCNs, Comprehensive Cancer Centres (CCCs), and other stakeholders in the cancer care ecosystem.

The ultimate goal is to provide that all patients at every stage of the disease with access to high-quality care across the full cancer care continuum, from early detection and diagnosis to treatment, follow-up, and, when needed, palliative care.



WP9: COMPREHENSIVE CANCER CARE NETWORKS

Key Activities

Work Package 9 (WP9) aims to expand access to comprehensive, high-quality, tumour-specific care within Comprehensive Cancer Care Networks (CCCNs) across all EU Member States. The goal is to ensure patients can receive treatment close to home while reducing inequalities in cancer care throughout Europe.

WP9 promotes high standards of care by fostering sustainable collaboration between CCCNs, Comprehensive Cancer Centres (CCCs), and other stakeholders in the cancer care ecosystem. The ultimate goal is to provide that all patients at every stage of the disease with access to high-quality care across the full cancer care continuum, from early detection and diagnosis to treatment, follow-up, and, when needed, palliative care.

1

Facilitating the implementation of CCCNs

Support the establishment of CCCNs in all EU Member States, building on the work in previous Joint Actions CanCon, iPAAC and CraNE, with a focus on quality, accessibility, cooperation and interfaces with CCCs and other stakeholders.

2

Advancing high-quality care standards

Update and further develop tumour-specific Sets of Standards and Quality Indicators and develop a patient pathway repository and strengthen structured data documentation processes for Quality Indicators.

3

Supporting capacity building and training

Develop and implement support tools and training instruments to facilitate setting up quality-assured CCCNs, in cooperation with WP6 and WP8

4

Conducting feasibility testing and certification

Establish up to 15 quality assured pilot CCCNs in 9 Member States and test the feasibility of the CCCN certification framework in alignment with WP5.

5

Providing sustainability recommendations

Develop recommendations for the sustainable expansion and implementation of the CCCN certification framework, integrated into a broader sustainability roadmap in collaboration with WP4.



WP9: COMPREHENSIVE CANCER CARE NETWORKS

Results

Expected outcomes

WP9 will contribute to reducing inequalities in cancer care across Europe by supporting the implementation of high-quality, tumour-specific care within local and regional networks. As a result, more patients will have access to comprehensive cancer services close to home, regardless of where they live.

Strengthened partnerships and clearly defined interfaces between CCCNs and CCCs will improve care coordination, enhance data quality, and support better decision-making. Ultimately, WP9 will help ensure that patients across the EU benefit from equitable, timely, and high-quality cancer care at all stages of their disease.

WP9 brings tumour-specific, high-quality care closer to home—strengthening CCCN–CCC links for better coordination, data, and outcomes.

Contribution to the Joint Action

WP9 contributes to the overarching aim of EUnetCCC by promoting equitable access to high-quality cancer care for all patients, across all stages of the disease. By integrating services from early detection and diagnosis to treatment, follow-up, and palliative care, CCCNs bring comprehensive care closer to patients' homes, reducing disparities and improving outcomes. CCCNs establish structured, sustainable partnerships with CCCs and other key actors across the cancer care continuum.

These coordinated interfaces are essential for achieving Flagship No. 5 of Europe's Beating Cancer Plan (EBCP), which aims that by 2030, 90% of eligible patients will benefit from high-quality diagnosis and treatment close to home. WP9 helps to turn this vision into practice.

WP9 advances EBCP Flagship #5—linking CCCNs with CCCs to deliver end-to-end, high-quality cancer care close to home.

Partners



Austria



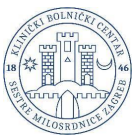
Belgium



Bulgaria



Croatia



Denmark



Lillebaelt Hospital
University Hospital of Southern Denmark

Cyprus



Estonia



Czechia



Finland



France



Germany



Greece



Hungary



NNGYK
NATIONAL CENTER FOR PUBLIC
HEALTH AND PHARMACY

Iceland



Ireland



An Roinn Sláinte
Department of Health

Sláinte Leanaí Éireann



THE MATER
HOSPITAL



ST. VINCENT'S
HEALTHCARE GROUP
Advancing Healthcare Since 1834

OSPIDÉAL SAN SÉAMAS



ST JAMES'S HOSPITAL



Institiúid Ailse Choláiste
na Tríonóide/San Séamas
Trinity St James's
Cancer Institute



Italy



Latvia



Lithuania



Luxembourg



Malta



Moldova



Netherlands



Norway



Poland



Portugal



Romania



INSP



Slovakia



Slovenia



Spain



Sweden

Sahlgrenska Comprehensive Cancer Centre



Linköping Comprehensive Cancer Center



Ukraine





**Funded by
the European Union**

The EUnetCCC Joint Action is co-funded by the European Union. The views expressed are solely those of the authors and do not necessarily reflect those of the European Union or the European Health and Digital Executive Agency (HaDEA). Neither the European Union nor the granting authority can be held responsible for them. The authors are not responsible for any future use of this document by third parties nor for any translations made by third parties.